



5 Lockgate Road, London  
SW6

GARTON JONES.COM



5 Lockgate Road, London  
, SW6

GARTON JONES.COM

11 Park Street  
Chelsea Creek  
London  
SW6 2FS

Sales +44 (0) 20 7824 7090  
paul@gartonjones.com  
www.gartonjones.com

## £900 Per Week

### Stylish Two-Bedroom Apartment with Balcony

Situated in the desirable Savoy House within Chelsea Creek, this beautifully presented two-bedroom apartment offers 802 sqft of well-designed living space, set in one of London's most elegant dockside developments.

The home features a bright open-plan living and dining area with floor-to-ceiling glass doors leading onto a generous private balcony overlooking a charming tree-lined boulevard. The modern kitchen is fully fitted with high-spec integrated appliances. Both bedrooms enjoy excellent natural light, with the principal bedroom featuring a built-in fitted wardrobe, and the guest bathroom finished to a contemporary standard with a bath and shower.

### Development Features

- 24-hour concierge
- Residents-only spa, swimming pool & fitness suite
- Landscaped gardens and tranquil water features
- Built by Berkeley St George

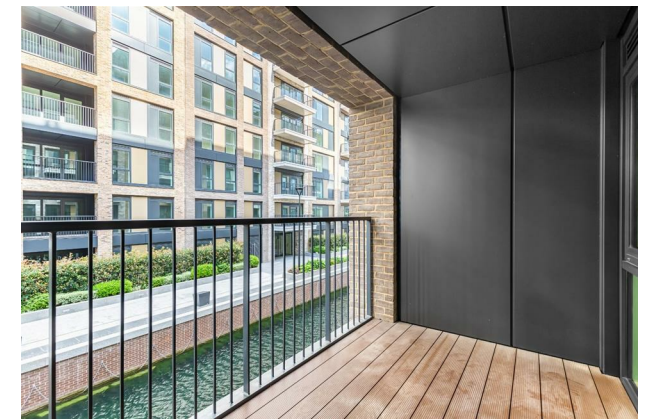
### Prime Location

- Imperial Wharf Station — just minutes away
- Close to King's Road, Chelsea Harbour & Fulham Broadway
- Excellent access to boutique shopping, fine dining, and transport links

5 Weeks Security Deposit  
12 Month Tenancy  
Council Tax — London Borough Of Hammersmith & Fulham — Band G

EPC B (85)

- Two Bedrooms & Two Bathrooms
- 802sqft (74.5sqm)
- Popular Building At Chelsea Creek
- Furnished
- Balcony With Attractive Views
- High Specification
- 24 Hour Concierge
- Residents Spa — Gym & Swimming Pool
- Walking Distance Of Imperial Wharf Overground Station
- EPC B (85)

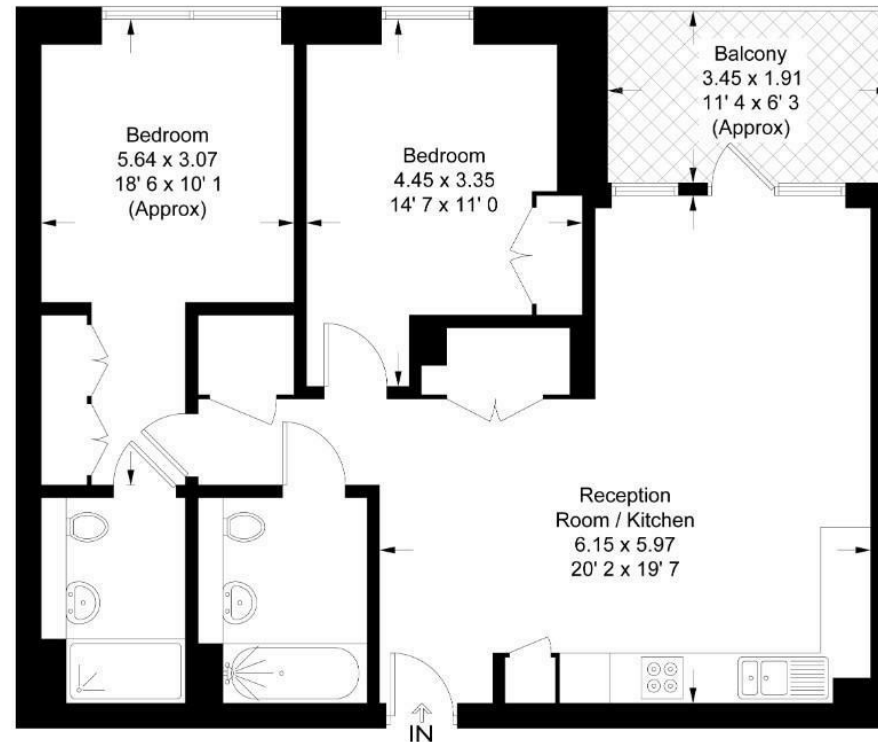


EPC certificate available on request.

## Savoy House

Approximate Gross Internal Area = 802 sq ft / 74.5 sq m  
Balcony = 71 sq ft / 6.6 sq m

GARTON JONES  
LONDON



First Floor

This plan is not to scale and must be used as layout guidance only. All measurements and areas are approximate and should not be relied upon to provide accurate information. This plan must not be relied upon when making property valuations, design considerations or any other such relevant decisions. We accept no responsibility or liability (whether in contract, tort or otherwise) in relation to any loss whatsoever arising from or in connection with any use of this plan or the adequacy, accuracy or completeness of it or any information within it.





